

# Dell KACE™ K1000 Management Appliance

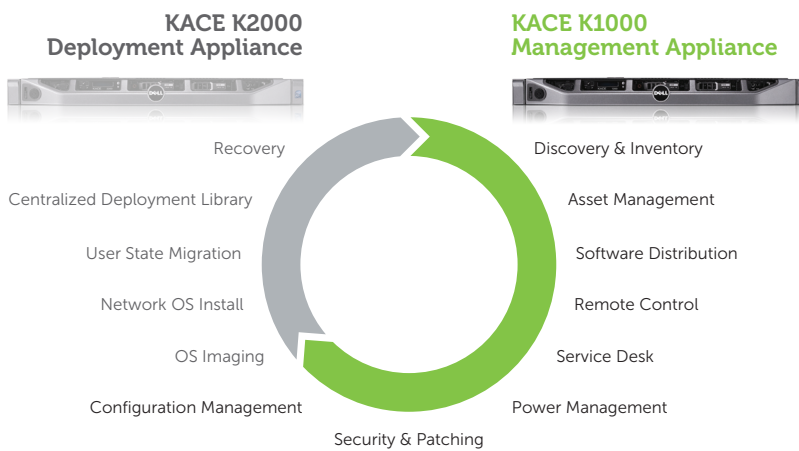


Easy-to-use, comprehensive, affordable systems management appliance

The Dell KACE™ K1000 Management Appliance fulfills all of the system management needs of an organization from initial system deployment to ongoing management and retirement.

**Designed to save you time, and save your organization money, the KACE Management Appliance typically installs in under one day at a low total cost.**

## Computer Lifecycle Management



The KACE Management Appliance delivers a fully integrated systems management solution, unlike traditional software approaches that can require complex and time-consuming deployment and maintenance. KACE accomplishes this via an extremely flexible, intelligent appliance-based architecture that deploys quickly and is self maintaining.

KACE Appliances are available as both physical and virtual appliances, providing customers with a variety of deployment options and allowing them to leverage their investment in VMware Infrastructure.

### KACE Benefits

Organizations of all types use the KACE Family of Appliances to gain benefits in markets such as education, state and local government, healthcare, financial services, manufacturing, legal, and many more.

- **Deploy in as little as one day**
- **Train in hours via the Web**
- **Upgrade in minutes**
- **Low total cost of ownership**
- **No hardware or software pre-requisites**
- **No incremental professional service fees**

"The KACE Appliance saves me two days of work every week. It's simple to use with a short learning curve. It's like another person in our IT department, enabling us to grow without having to hire anyone."

**Peter Perez**

*Network & Technical Specialist,  
Battle Ground Academy*

Go to [www.dell.com/kace](http://www.dell.com/kace) for details.

# KACE Management Appliances

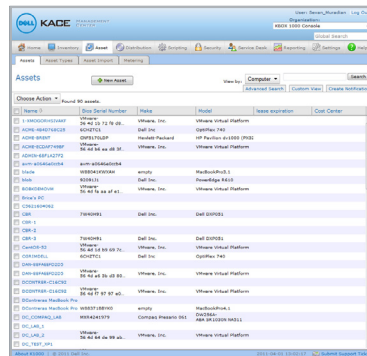
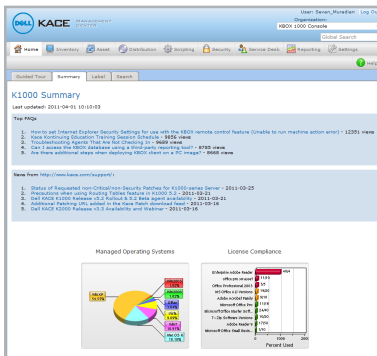
Fulfill the systems management needs of any organization

- **Device discovery & inventory** of all hardware and software network-wide
- **Patch management** for automated vulnerability analysis and delivery of patches
- **Asset management** for comprehensive asset tracking and compliance reporting
- **Configuration & policy management** via pre-packaged or custom policies
- **Power management** enables the creation and deployment of energy saving configuration policies
- **Reporting & dashboards** creates both pre-packaged and custom, wizard-generated reports
- **Remote site replication** for geographically diverse organizations using existing file servers
- **Broadcast alerts** for user notification of important events such as the interruption of e-mail service
- **Organizational management** allows for multiple domain support for decentralized IT environments
- **Software distribution** for remote distribution and installation of applications and digital assets
- **Secure Browser** uses virtualization technology to provide a safer web experience and added security for specialized browsers
- **Service desk & user portal** includes integrated incident and problem management as well as self service through the user portal
- **Security audit & enforcement** assesses vulnerability and uses remediation utilities to identify and lock down and quarantine endpoint security vulnerabilities
- **Administrative alerts** on a variety of computer and network attributes for easy exception-based management
- **Remote control** enables centralized problem resolution with no site visit required
- **AppDeploy<sup>SM</sup> Live** tool for deployment best practices via an exclusive feed from our ITNinja.com community, formerly AppDeploy.com

“We had a physical KACE Appliance, but were looking to consolidate, reduce our heat and power footprint and be more green as an IT organization. Those were the primary factors in deciding to bring in the KACE Virtual Appliance.”

**Tim Suttle**

*Director of IS Infrastructure,  
TechSoup Global*



The K1000 Management Appliance utilizes a familiar tab-based interface that allows IT administrators of all skill levels to accomplish the breadth of systems management tasks.

## KACE 2011 Customer Survey Results

- 71% of users who evaluated ROI report the KACE Appliance paid for itself in less than six months
- 62% of KACE customers deployed in less than a week
- 74% of KACE customers reported “high” satisfaction with KACE Appliances

## K1000 Administration: Simple and Secure

The K1000 Web-based console provides access to all administrative functions from any device using a supported browser, including:

- Comprehensive search capability enables search across entire K1000 database
- Authentication, permissions and administrative rights management all managed through single interface
- Real-time LDAP and AD integration
- Wake on LAN capabilities for after hours maintenance
- "One click" appliance software upgrades
- Labeling eases administration by grouping computers by LDAP OU, department, location, IP address or any characteristic, speeding software distribution, alerts, and more
- Audit tracking ensures key administration activities are tracked by time and activity owner, improving governance
- 100% Web-based console allows for seamless K1000 and K2000 Appliances administration from any device including PCs, tablets and handhelds

## Centralized, powerful real-time KACE architecture

### KACE Agent Messaging Protocol

The K1000 includes an advanced client server communication protocol, KACE Agent Messaging Protocol, to provide efficient, real-time communication between the K1000 agent and appliance. This enables the K1000 to scale to manage high numbers of local and remote systems (up to 20,000), and the ability to immediately execute management actions against systems-network wide to remediate security vulnerabilities, address compliance requirements and distribute urgent updates.

### KACE Remote Replication & Alternate Download Locations

The K1000 can effectively manage remote offices without the need for dedicated hardware or staff at those locations through KACE Remote Replication. These capabilities dramatically reduce the cost and complexity of managing a multi-site organization:

- Easy-to-use configuration options for scheduling replication reduces complexity and time to manage remote sites
- Bandwidth throttling and synchronization minimize network impact
- Checkpoint restart improves reliability and reduces network traffic
- Dynamic policy groups make it easy to automatically organize and target systems at remote sites
- Remote shares supported on existing Windows, Linux or Mac servers eliminating the need to purchase dedicated hardware

"In our environment I would say that without the KACE Appliance, we would have had to hire two or three more people."

**Michael Williams**

*Director IT,  
Dexter Southfield*

## Dell KACE Management Appliances

KACE Management Appliances deliver a powerful set of systems management capabilities that help businesses manage laptops, desktops, servers and tablets, improve security, meet compliance requirements and decrease user downtime; yet they perform behind a simple-to-use interface designed for systems administrators of all skill levels.

## Tech Specs

		K1100s*	K1100s-ADV*	K1200s**
Capacity	Recommended Maximum Managed Nodes	1,000	3,500	20,000
	Storage	1 TB	1.5 TB	1.8 TB
Hardware	Platform	R420	R420	R420
	CPU Quantity	1	1	2
	Core Clock Rate	1.9GHz	2.2GHz	2.2GHz
	Cores	6	6	6
	NIC	2X1GB (Intel)	2X1GB (Intel)	2X1GB (Intel)
	Memory	1X4G	2X4G	4X4G
	Memory Speed	1600	1600	1600
	RAID Controller	H710 Mini	H710 Mini	H710 Mini
	RAID Level	5	5	5
	Hot-swappable Hard Drives	3 X 500GB	4 X 500GB	4 X 600GB SAS
		3.5" 7.2K RPM 3Gb/s	3.5" X 7.2K RPM 3Gb/s	2.5" X 10K RPM 3Gb/s
	Additional Media	DVD	DVD	DVD
	Systems Mgmt.	iDRAC Enterprise	iDRAC Enterprise	iDRAC Enterprise
	Power Supply	Single 550W	Redundant 550W	Redundant 550W
	Branding (Badge)	K1100 Badge	K1100-ADV Badge	K1200 Badge
Height	1RU	1RU	1RU	

		VK1000
Capacity	Recommended Maximum Managed Nodes	10,000
Virtual Machine Requirements	VCPUs	4 VCPUs (6000 Mhz or More Reserved/Shares = High)
	Memory	4 GB (1024 MB or More Reserved/Shares = High)
	Network	1 Ethernet Port
	Available Disk	500 GB
	Server and Operating System	64-Bit

NOTE: Exact hardware specifications will vary based on availability, and can change without notice.

\*Node-based licensing

\*\*Appliance-based licensing

## System Requirements

### Managed System Requirements

For minimum specifications refer to OS vendor minimum requirements. The K1000 imposes no additional requirements and supports 32-bit & 64-bit architectures where applicable.

#### • Windows®

Windows 8 x86  
(Professional, Enterprise)  
Windows 7  
(Professional, Enterprise, Ultimate)  
Windows Vista  
(Business, Enterprise, Ultimate)  
Windows XP  
(Professional)  
Windows Server 2012  
(Foundation, Essentials, Standard<sup>†</sup>, Data Center<sup>†</sup>)  
<sup>†</sup>Cannot be running in Server Core mode  
Windows Server 2008 R2  
(Enterprise, Standard, Web)  
Windows Server 2008  
(Enterprise, Standard, Web)  
Windows Server 2003  
(Enterprise, Standard, Web)

#### • Mac

Mac OS X 10.4 - 10.8  
PowerPC and x86 architectures

#### • Linux

Red Hat Linux AS and ES  
Versions 4.x, 5.x, 6.0-6.2  
SUSE Linux Enterprise Server  
Version 11.4  
Ubuntu Linux  
Versions 10.04, 12.04

### Web Administration Interface Requirements

Microsoft Internet Explorer 7.x-10  
Mozilla Firefox 3.x+, Safari 3+

### VK1000 Appliance Requirements

VMware ESX and ESXi Server 3.5 or 4.0

Open Virtualization Format (OVF) 1.0



## Dell KACE Headquarters

2001 Landings Drive  
Mountain View, CA 94043  
877-MGMT-DONE Main  
650-649-1806 Fax

## www.dell.com/kace

kaceinfo@dell.com  
European Sales: kaceemea@dell.com  
Asia Pacific Sales: kaceapac@dell.com  
Australia New Zealand Sales: kaceanz@dell.com  
Greater China Sales: kacegc@dell.com

While every effort is made to ensure the information given is accurate, Dell does not accept liability for any errors or mistakes which may arise. Specifications and other information in this document may be subject to change without notice.

Dell and KACE are trademarks of Dell Inc. Dell disclaims any proprietary interest in the marks and names of others. Microsoft and Windows are registered trademarks of Microsoft Corporation. SUSE is a registered trademark of Novell, Inc. Ubuntu is a registered trademark of Canonical Ltd.

